

LONG AND BASS LAKE ASSOCIATION

MEMBERSHIP HANDBOOK

Created in 2002
Revised: May 2004; May 2007
August 2007
August 2013

TABLE OF CONTENTS

Forward, Mission Statement, and Local Phone Numbers of Interest	Page 2
History of Harrison Hills and Long and Bass Lake Association	Page 3
Lake Association Events and Activities	Page 4-5
Natural Resources in Harrison Hills	Page 6-7
Boating Safety	Page 8
Your Neighbors , and Trash and Recycling	Page 9
Other Recreational Opportunities	Page 9 - 10

EXHIBIT SECTION

TAB

- A. Long and Bass Lake Association Bylaws**
- B. Long and Bass Lakes Informational Maps**
- C. Harrison Hills Roads and Lakes Map**
- D. Slow - No Wake, 100 foot zone**
- E. Slow - No Wake, 200 foot zone**

FOREWORD

This Handbook is intended to provide information in one place which Association members should find valuable.

The Handbook is a compilation of the various recreational activities, guidelines and suggestions which the membership of the Association are asked to abide by while enjoying our lakes and surrounding areas. The safe use of our watercrafts is paramount in our thinking. Please keep this thought in mind and share it with your guests and others who visit our lakes.

Mission Statement

Nature sculpted this area over a very long period of time, and it's our responsibility to do our best to maintain these resources. With all our help, the peace, tranquility, water quality, and purity of this exceptional area of the State of Wisconsin will remain pristine for future generations. What we do now will ensure we leave a beautiful legacy for future generations.

LOCAL TELEPHONE NUMBERS OF INTEREST

Lincoln Co. Emergency number: 9-1-1
Lincoln Co. Sheriff (non-emergency) 715-536-6272
Lincoln County Service Center: 715-539-1019
Post Office: Gleason 873-4573; Tomahawk 715-453-2831
Town Chairman: John Bailey 715-362-3019
Paul Schoone (garbage pick-up and/or recycling): 715-453-5494
Nut-Zee's Inn: 715-453-8546
BLT's:
Prairie Pines Country Store: 715-873-4840
Bailey's Town and Country Tavern: 715-362-3019
Harrison Oasis: 715-453-3294
Sacred Heart-Saint Mary's Hospitals:
Tomahawk: 715-453-7700 (715-453-7800-emergency); Rhinelander: 715-361-2000
Good Samaritan Health Center, Merrill 715-536-5511 (walk-in Clinic-715-539-2194)

HISTORY OF THE HARRISON HILLS **AND THE LONG & BASS LAKE ASSOCIATION**

The Harrison Hills formed over a long period of time. 1.5 billion years ago most of the United States was under water. There were volcanic mountains in over one-third of the State of Wisconsin, including Lincoln County. The base of these mountains, which are much older than the Rockies or Appalachians, underlie the northern one-third of Wisconsin. These bases include granite and other igneous rocks mixed with sedimentary layers. Erosion provided for new sedimentary rock beds. Several times erosion and other forces pushed up new mountains. The first life in the area during this period were crustaceans which arrived about 500 million years ago. Next came sharks and armored fish, sturgeon predecessors. Then, all of Wisconsin became elevated above the sea, and amphibians developed. Later came the age of reptiles. Ferns, palms and primitive hardwoods developed. Mammals developed 50 or 60 million years ago, including mastodons, mammoths, saber-toothed tigers, large deer, caribou and bison. The glaciers scoured the land 17,000 years ago, at which time many mammals became extinct. Ice tore off the top of hills, grinding them to clay and mud, filling in valleys and spreading topsoil from Canada. They dug the Great Lakes in the pre-glacial river valleys and left a great number of smaller lakes scattered over Wisconsin when they melted. When the glaciers receded they left behind boulders and kettles from melted and buried ice blocks, and terminal moraines - the last ridges of drift left standing.

10,000 years ago the first inhabitants, people of Asian descent, arrived in the area. Europeans, and French traders and trappers, did not discover the area until the 17th century. The first British settlement occurred between 1760 and 1815, while the French still remained. Wisconsin became part of the United States in 1815 as part of the Northwest Territory and finally as a state in 1848.

The logging industry developed in the late 1800's because the area had some of the largest and finest pine forests in the country. This area around Long and Bass Lakes was logged extensively. The first homesteaders of European descent moved into the Harrison area during this period. Some of these families are still represented in the area. The first railroad in the region was constructed in 1870 to haul lumber farther from the rivers.

Recreational use of the lakes area began in the 1940's when some of the lumber companies began to sell off land, and Long and Bass lakes property owners' families arrived.

The Long and Bass Lake Association was formed in 1985 by a group of lake property owners primarily as a social organization. A lake party was started at that time. The Association membership has grown to approximately 185 members and friends. Association activism has increased dramatically and, as a result, its interests have broadened to include fish stocking and habitat extension, water clarity and invasive species awareness, social event, including the 4th of July fireworks display, Teach-A-Kid-To-Fish, Annual Pontoon Parade and Lakes Socia, legislative watch and action, charity events, as well as other activities.

Long and Bass Lake Association Bylaws are included (See Exhibit A).

LAKE ASSOCIATION EVENTS & ACTIVITIES

Membership Meetings - The Long & Bass Lake Association strives to involve and educate all of its members. Each year, association members are invited to attend two (2) meetings. The first meeting of the year is the Saturday of the Memorial Day weekend at 10:00 a.m. and the second meeting is the 3rd Saturday of August at 9:00 a.m. These meetings are held at local establishments – typically Nut-Zee's Inn and Harrison Oasis. Minutes of these meetings are mailed to members or friends of the lake via U.S. Mail or emailed if you've provided an email address. All are invited to review the minutes.

Pontoon to Pantry Day - The Association conducts a food drive on the Saturday of Memorial Day weekend for a Food Pantry. Food is gathered from Association members at the May meeting. Cottage owners from other lakes in the Harrison Hills, as well as the general public, may also bring donations to the meeting.

4th of July Celebration - There is no better place to celebrate the 4th of July, and to view fireworks, than on the water. Several professionally trained and federally licensed Long & Bass Lake Association members offer a spectacular fireworks display, which has been conducted from the shoreline of the Mel & Kathy Laudolff cottage on Bass Lake. It is a marvelous spot which offers a stunning view of the show from Bass Lake or Bear Trail Road. This event is funded by donations from members and friends of the Long & Bass Lake Association, Pickerel Lake District and several local business sponsors, and is held as funding allows, which will be announced at the August meeting prior to the year of the display. Plan on staying in the area to enjoy a display that is unsurpassed by any community in the Northwoods.

Our Association has been granted a license to conduct this fireworks display with the understanding we would discontinue fireworks activities at individual properties. The objective is to reduce the probability of injury and fires by not having amateurs handle fireworks of ANY size! Please help us retain our license by not using fireworks at your property.

Harrison Hills Charity Fund Golf Outing - This golf outing is a nice addition to the enjoyable events offered to those spending time on the lakes. The event is held the third Saturday in July. The Harrison Hills Charity Fund Golf Outing was established to encourage those who enjoy golf to get together to raise funds for worthy causes. The outing raises about \$2,000 per event, which is presented to local organizations (ie: Town of Russell Volunteer Fire Department, First Responders, etc.). Come join in the fun.

Teach-A-Kid-To-Fish - Fishing captivates men, women, boys and girls. Each summer the Long & Bass Lake Association sponsors a fishing contest for kids age 16 and under on the second Saturday of August. This wonderful day teams kids with adults to learn how to fish safely and enjoy this wonderful pastime. All children who participate in the day receive prizes. Awards are also given for the largest catch in each fish category from each age group.

Pontoon Parade & Lakes Social - Close your eyes, envision a parade of pontoons and other watercraft, brightly decorated, circling around both lakes, led by a floating Polka Band, and you'll be experiencing summer fun on the lakes. Enjoy the trip around the lakes with your friends and neighbors, kids and grandkids. Prizes are awarded for the best decorated pontoons. The parade ends with a lake picnic held at one of the shoreline properties each summer. Watch for the placement of the Picnic Sign as you traverse the water, mid-summer, and put the 3rd Saturday of August on your calendar for a great time with all your lake neighbors. This potluck event offers great food entertainment and an opportunity to meet our neighbors from the lakes.

Fish Stocking and Fish Cribs - The fishery in Long and Bass Lake is a wonderful resource for all to enjoy. Our walleye stocking program, in harmony with the DNR, helps to keep the fish populations at good levels. These stocking efforts have been done in conjunction with Tomahawk Fishing Unlimited, and our joint efforts, to date, have been very successful. Our Association also promotes catch and release techniques to assure that this exciting sport can be enjoyed by all for years to come. A group of Association members created a rock reef just north of the public boat landing to promote natural walleye spawning. They have also placed fish cribs on the lake bottom which offer shelter to small fish and are invaluable to the overall success of our lakes fish population (See Exhibit C for fish crib locations).

Water Clarity – Several of our Association members volunteer their time to monitor and report water clarity, temperature, chlorophyll and phosphorous levels to the DNR. Gratefully, we have not disturbed the quality of our water throughout the years. Our spring-fed lakes are among the CLEAREST in the State of Wisconsin! You can see the results of the readings at <http://dnr.wi.gov/org/water/fhp/lakes/Selfhelp/Reports/Reports.asp?County=Lincoln>
All you need to do is select which lake data you would like to see!

Aquatic Invasive Species (AIS) – We continue to educate our members, and they in turn educate their guests about AIS. We must always be on the lookout for, and cannot tolerate careless people who transfer these species between rivers and lakes. Among the most prevalent of the AIS that we must be aware of are the Eurasian Milfoil weed and Zebra mussels.

From the DNR web site <http://dnr.wi.gov/invasives/> - Invasive species can alter ecological relationships among native species and can affect ecosystem function, economic value of ecosystems, and human health. A species is regarded as invasive if it has been introduced by human action to a location, area, or region where it did not previously occur naturally (i.e., is not native), becomes capable of establishing a breeding population in the new location without further intervention by humans, and spreads widely throughout the new location.

Controlling invasive species is compounded by the fact they lack natural checks and balances. DNR staff monitor the presence and spread of invasive species, work with partners to educate the public, and research control methods.

As highly adaptable and generalized species are introduced to environments already impacted by human activities, native species are put at a distinct disadvantage to survive. Clearly, a primary threat to biodiversity is the spread of human activity into once pristine areas. Spreading invasive species through various methods include some of these examples:

- Moving watercrafts from waterbody to waterbody without removing invasive plants and animals
- Importing firewood
- Driving and biking with invasive seeds in tire treads

The net result is a loss of diversity of our native plants and animals as invasive species rapidly multiply and take over. About 42% of the species on the federal Threatened or Endangered species lists are at risk primarily because of invasive species.

NATURAL RESOURCES IN HARRISON HILLS

Water Quality of Long and Bass Lakes

Clarity and chemical testing by our Lake Association, satellite photos analyzed by the Wisconsin DNR, and a lake bottom core sample requested by our Lake Association and completed by the DNR, indicates ~~that~~ the water quality is excellent. They noted a small decrease in the water clarity over the past one hundred years, likely due to an increase in the phosphorus level. Fortunately, there has not been a significant increase in aquatic plants due to harmful run-off since the onset of shoreland development. The lakes have not been adversely affected by acid rain, although they are potentially sensitive to it due to the water chemistry.

Many lakes in our state have not fared as well. We must do our best to maintain the water quality by:

1. Supporting and doing our part in "shoreland management" to keep excess runoff and other waste products from polluting the lakes.
2. Making sure we check our boats so we don't introduce unwanted exotic plants or zebra mussels into the lakes.
3. Protecting existing aquatic plant beds as much as possible by not disturbing the lake bottom.
4. Using and maintaining fuel-efficient motors on our boats to keep fuel and oil out of the lakes.
5. Keeping the lakes litter-free and by doing our part in cleaning up the trash we find.

Shoreland Management

Protecting the land area within a couple of hundred feet of the shoreline of the lakes and 20 to 30 feet into the lake is critical for maintaining our Harrison Hills natural resources. The land area just above the lake is a filter or buffer for unwanted runoff, a prime habitat for wildlife and the site of the scenic beauty that surrounds us. The shallow areas near shore are also critical for wildlife and for fish spawning and cover.

We suggest you consider the following:

1. Follow state and county zoning and development rules in any construction, remodeling or landscaping you undertake. For more information contact Lincoln County Zoning office at (715) 539-1087 or visit their website at co.lincoln.wi.us. Setbacks and sanitary disposal are particularly critical.
2. Maintain and restore as much as possible of the buffer zone required by state law.
3. Maintain lake weed beds as much as possible.
4. Leave fallen trees in the water near shoreline areas as much as possible.
5. Maintain no-wake boating speeds near the shoreline to benefit weed growth, not to disturb nesting wildlife and spawning fish, and reduce shoreline erosion (see Exhibits, D and E).
6. Respect the no-wake areas at buoy locations.

For additional information on shoreland management contact the Lincoln County Zoning office at 715-539-1087, or visit their website at co.lincoln.wi.us.

Sensitive Area Designation

The DNR recently provided a Sensitive Area Designation Study for a number of locations around Long and Bass Lakes. This Sensitive Area Designation Study, sponsored and funded by the State of Wisconsin, identifies places on our lakes which are critical for water quality and habitat, and promotes efforts to maintain these resources. A team of DNR specialists identified the sensitive areas and provided a report. This information is intended to be used as:

1. A tool for lake management planning.
2. A tool for habitat protection programs.
3. A tool for DNR permits process decisions.
4. A baseline field survey.

The map of the lakes, provided in this Handbook, identifies these areas where we need to pay particular attention (See Exhibit B).

Wildlife Management

We have abundant wildlife in the area. Most of us enjoy watching the eagles, loons, ducks, deer, bear, fox, birds and other animals that are our neighbors. We can enhance the continued success of these creatures by being sensitive to the shoreline area as previously mentioned and by avoiding approaching too closely or harassing these birds and animals, for example loons, as they are very sensitive to such encounters.

BOATING SAFETY

We want everyone's lake excursion to be a safe one. Awareness of the Coast Guard rules of navigation and the basic DNR regulations for boating will be an important aspect in creating a safe and enjoyable day of watercraft use.

COMMON SENSE

Please urge your guests to follow our Association guidelines and the DNR Boating regulations.

CONCERNS

- Be aware of wildlife and the sensitive areas of the lakes. See Exhibit B.
- Be aware that watercraft traveling at excessive speeds, or just above the no-wake speed, operating too close to docks and shorelines create severe erosion. Pay special attention and adhere to the "No Wake" buoys in the south bay area and the channel between Long and Bass Lakes.
- Be aware of those around you: swimmers, tubers, skiers, fishing boats, pontoons, speedboats, kayaks and canoes, paddle boats, personal watercraft (PWC) and divers. We follow basic "gentlemen's rules" of navigation. We also advise, ~~that~~ out of respect for all water-sport enthusiasts, water skiing, tubing and high-speed boating be conducted between the hours of 10:00 A.M. and 7:00 P.M. in order to allow peaceful fishing in the morning and evenings. Please be aware that many pontoon boats hit the water around 3:00 for relaxing late afternoon rides for our members, their families and guests - thank you!

(For further information read the Wisconsin Boating Regulations Pamphlet.)

YOUR NEIGHBORS

As our surveys have indicated, the property owners and visitors of Long and Bass Lake are a diverse group of people, coming to the area to enjoy a multitude of activities. Living by and visiting the lakes provides a unique opportunity to get to meet people who are coming from different locations with the common purpose of enjoying the beauty and activities of the lakes. While making and maintaining relationships with other property owners and visitors, it is important to keep these considerations in mind:

- A. Noise levels should be reduced at 10:00 P.M. This includes music, animals, crowds, personal fireworks, etc. Everyone should be aware sounds travel easily over the water, so, even though your guests or you might be some distance from your neighbors, you can readily be heard.
- B. A good guideline is to always respect the rights of others, whether you are on the water or on land.
- C. Remember people are enjoying the lakes for a variety of reasons. Please comply with the posted signs and notices, and use common sense.

TRASH AND RECYCLING

Please take your trash with you or arrange for a local pick up service. We do not have a public dumping area in Harrison Hills and the town does not provide garbage pick-up service. If you arrange for private pick-up service please place your bags in a container with a secure cover to prevent animals from getting into it! To arrange for garbage pick-up please call Paul Schoone at 715-453-5494. The town does offer a recycling opportunity the 2nd and 4th Saturday of the month from approximately 8:30-10:30 AM at the Town Hall. Items collected for recycling include: newspapers, magazines, tin and aluminum cans, plastic bottles and containers and glass (sort clear and colored).

OTHER RECREATIONAL OPPORTUNITIES

The Harrison Hills Area offers a great variety of outdoor recreational opportunities in addition to boating and fishing. A partial list would include snowshoeing, cross-country skiing, hiking, horseback riding, sleigh rides, snowmobiling and ATV riding. Trails for these activities are documented on county and township maps and may be acquired at the Lincoln County Service Center or locally at Harrison Oasis, and Nut-Zee's Inn.

Snowmobiling and ATV Riding - Several snowmobile and ATV clubs can be found in the lakes area which make riding safer and more enjoyable by maintaining the quality of the trails. The Town of Harrison has designated TOWN roads as ATV and snowmobile trails, some County Highways are included. You may travel any town road when trails are open – please respect the privilege: do not speed or otherwise drive improperly, do not litter, keep dust and noise to a minimum and do not operate when trails are closed. ATV operation begins May 1st and continues through the snowmobile season when temperatures are BELOW 28 degrees. Parking areas with trail access include Harrison Convenience Store, Hwy B southwest of Nut-Zee's Inn, the west end of Cinder Road, Highway B near the fire tower and Turtle Lake Road near Highway J. Please see (Exhibit C) for information regarding Town of Harrison roads and lakes.

It is your responsibility to know all current local, county and state laws regarding the operation of your ATV and snowmobile.

Lincoln County and the Knight Owls trail systems connect with many other clubs and county trail systems. Their rules may be different. Know the laws in the areas you are riding in.

Enjoy our trails and the hospitality of all of our business members.

Information on the Knight Owls Snowmobile Club can be found at <http://knightowlsnowmobileclub.com/>

Information on the Parrish Highlander ATV Club can be found at <http://www.parrishhighlands.com/contact/default.asp>. Information on the Harrison Hills ATV Club can be found at http://www.harrisonhillsatvclub.com/hh_index.php.

Ice Age Trail – From their web site <http://www.iceagetrail.org/Northwoods/index.htm> - Lincoln County lies within the Northern Highlands, once a highly mountainous region. Long before the Ice Age, much of this range had eroded away. The glaciers continued to abrade the higher peaks and fill in the valleys with debris. The Wisconsin Valley Lobe covered most of northern and central Lincoln County during the last part of the Wisconsin Glaciation. A broad band of hilly topography marks the maximum extent of this lobe, which began to recede between 18,000 and 15,000 years ago. Two areas along this ice margin, where the topography often varies by more than 200 feet, are the Harrison Hills and Underdown.

The highest point of the Ice Age Trail is atop Lookout Mountain, in the Harrison Hills, offering scenic views to the northwest of a lake and forested landscape and to the southeast of a broad outwash plain. The Ice Age Trail winds its way through the Harrison Hills area crossing Highway B near the fire tower (at the ATV parking area), Turtle Lake Road and Parrish Road. Contact Northwoods Chapter Coordinator: Chris Schotz, W2611 Yanda Ave., Gleason, WI 54435, 715-873-4113, schotchr@rhinelander.k12.wi.us

CONSTITUTION AND BY-LAWS OF LONG AND BASS LAKE ASSOCIATION

PREAMBLE: We, the property owners and residents of Long and Bass Lake and vicinity, desiring to promote the interest and betterment of the community, and deeming ~~in~~ it our inherent right to organize for the attainment of these ends, do hereby adopt and ordain the Constitution and By-Laws herein set forth.

CONSTITUTION

ARTICLE I

NAME:

This organization shall be known as the Long and Bass Lake Association.

ARTICLE II

OBJECTIVES:

The objectives of the Association shall be:

- A. To improve Long and Bass Lake and the adjacent area.
- B. To promote activities that will improve the fishing, swimming, boating, and beautification of the lake.
- C. To foster good-fellowship and civic interest by providing good social and educational meetings.
- ~~D. Address Tax concerns of the Association membership with appropriate government bodies.~~

ARTICLE III MEMBERSHIP:

- A. There shall be two classes of memberships in the Association, identified and defined as follows:
 "Member": A full membership, eligibility for which shall include ownership of real estate at, or residence at, Long or Bass Lake. The term "member" or "membership" as used in this Constitution shall refer to "full member" or "full membership", respectively.

 "Friends of Long and Bass Lake Association": (Hereafter referred to as "Friends") "Friends" status ~~are~~ is granted to those persons interested in the promotion and betterment of the Long and Bass Lake Association.
- ~~B. Candidates for membership and "Friends" status shall be received into membership by a majority vote of the Board of Directors.~~
- ~~C. Transition of membership status to "Friends" status will take effect only on the first of the succeeding fiscal year.~~

ARTICLE IV

VOTING AND OFFICE-HOLDING PRIVILEGES:

- A. Every active member in good standing shall have the right to vote and hold office. Each property or residence shall have one vote.
- B. A member in good standing shall be defined as one whose dues are current.
- C. Friends" shall have neither voting nor office-holding privileges.

ARTICLE V

OFFICERS AND DIRECTORS:

- A. The officers of the Association shall be:
President,
Vice President,
Secretary,
Treasurer,
And there shall also be three Directors.
- B. The Board of Directors shall consist of the officers and directors listed in Section A, Article V and the immediate Past President.
- C. The President may appoint up to a maximum of two "Advisory Members" to the Board of Directors, who shall not have voting rights at the Board of Director meetings.

ARTICLE VI

TERMS OF OFFICE:

- A. A term shall be two (2) years.

ARTICLE VII

DUTIES OF OFFICERS:

- A. The duties of the officers are such as are implied in their respective titles and which usually pertain to their respective offices, and other duties that may, from time to time, be delegated to them by the membership or the Board of Directors.
- ~~1. The President will appoint members to unfilled Officer or Director positions caused by resignations or terminations.~~
- B. The President shall preside at all meetings of the Association (when possible) and shall appoint or terminate all committees and Advisory Members to the Board of Directors.
- C. The Vice President shall assume the duties of the President in the President's absence.
- D. The Secretary shall keep an accurate record of the proceedings at Association meetings and at Board of Directors meetings, and shall conduct all correspondence.
- E. The Treasurer shall collect all dues, receive all monies due from other sources, keep a record of all receipts and disbursements, and keep an accurate record of current membership and "Friends" status.
- F. The Directors shall perform duties as assigned by the President.
- G. The Board of Directors shall conduct the business of the Association and have the same rights, privileges, and duties as are generally conferred upon Boards of Directors.
- H. The Past President shall serve as the Nominating Committee Chair, if the Past President position is occupied. If the past President position is not occupied the President shall appoint a nominating committee chair.
- I. The President will appoint members to unfilled Officer or Director positions caused by resignations ~~ter~~ or terminations.
- ~~• Proposed change as of July 18, 2007.~~

ARTICLE VIII

NOMINATION AND ELECTIONS:

- A. A Nomination Committee will consist of three (3) members. The Nominating Committee Chair will select two (2) members to complete the Nominating Committee Membership. The committee's duty shall be to present for the annual meeting at which elections are held, a slate of Officers and Director candidates. They shall contact all proposed candidates and must obtain their consent.
- B. The election of two-year terms for Officers and Directors shall be conducted as follows:
- The President, Secretary and two (2) Directors shall be elected each even year at the May meeting.
 - The Vice President, Treasurer and one (1) Director shall be elected each odd year at the May meeting.

ARTICLE IX

STANDING COMMITTEES:

- A. The President will appoint members to Committees as identified by the Board of Directors.
- B. In addition, the President may, at any time, appoint or terminate special committees should the need arise.

ARTICLE X

AMENDMENTS:

This constitution may be amended, modified, or changed by a two-thirds vote of all members present at any regular business meeting, provided that notice of the proposed change has been presented in a previous meeting and announced by mail or email to all members at least one week previous to the meeting at which such change is to be voted on.

ARTICLE XI

DISSOLUTION:

This Association shall not be dissolved as long as ten (10) members desire its continuance. In the event of dissolution, all properties and funds over and above that which is necessary to meet any and all outstanding liabilities incurred by the Association shall be turned over to a non-sectarian charity designated by the members.

ARTICLE XII

RULES OF ORDER:

In all matters pertaining to the conduct of business, Roberts' Rules of Order shall govern.

ARTICLE XIII

MEETINGS:

Except as may otherwise be designated, the annual membership meeting of the Association shall be held on the fourth Saturday of May. Another meeting of the membership shall be the third Saturday in August.

ARTICLE XIV

SPECIAL MEETINGS:

Special membership meetings may be called at the request ~~often~~ of the members, or upon the request of the Board of Directors.

~~A membership meeting will be held each third Saturday in August.~~

ARTICLE XV

DUES:

The annual Membership and Friends dues of the Association shall be established by the Board of Directors and approved by the membership, payable by the first day of the fiscal year. Members and "Friends" who are one (1) year in arrears, after having been contacted ~~by the Membership and Publicity Committee and having been~~ given an opportunity to pay such arrears, shall automatically lose their applicable membership. New candidates for membership may be admitted to membership during the fiscal year. The dues for the remainder of that fiscal year to be established on a pro-rata basis by appropriate action of the Board of Directors. No dues will be refundable except by unanimous action of the Board of Directors.

ARTICLE XVI

QUORUM:

Ten (10) members shall constitute a quorum for the transaction of business.

ARTICLE XVII

FISCAL YEAR:

The fiscal year shall be from January 1 to December 31.

ARTICLE XVIII

RESIGNATIONS:

Any member or "Friend" may resign from the Association upon presenting his resignation personally or in writing to the Board of Directors.

ARTICLE XIX

TERMINATION OF MEMBERSHIP:

The applicable membership of any member or "Friend" may be terminated at the discretion of the Board of Directors.

~~Rev. August, 2003~~

Exhibit B

Welcome to Long and Bass Lakes! In order to enjoy a safe and pleasant visit for all, please take a moment to review your DNR boating regulations manual, as well as a few of our Lake Association guidelines.

Respect everyone's right to enjoy our lake-please follow our time guidelines:

- *Water-skiing/Personal Watercraft hours 10:00 a.m. - 7:00 p.m.
- *Quiet time 10:00 p.m. - 7:00 a.m.
- *Be considerate of fishermen - no wake, please.

Help traffic flow...Please keep the shoreline on your right when boating.

Help keep our Northwoods beautiful... Please take your trash with you when you leave.

Safety first! A spotter is required when skiing or tubing.

Sitting on bow of pontoon boat is illegal.

Help us maintain and improve our fishery...observe our catch and release guidelines.

are spawning this week - Catch and release only.

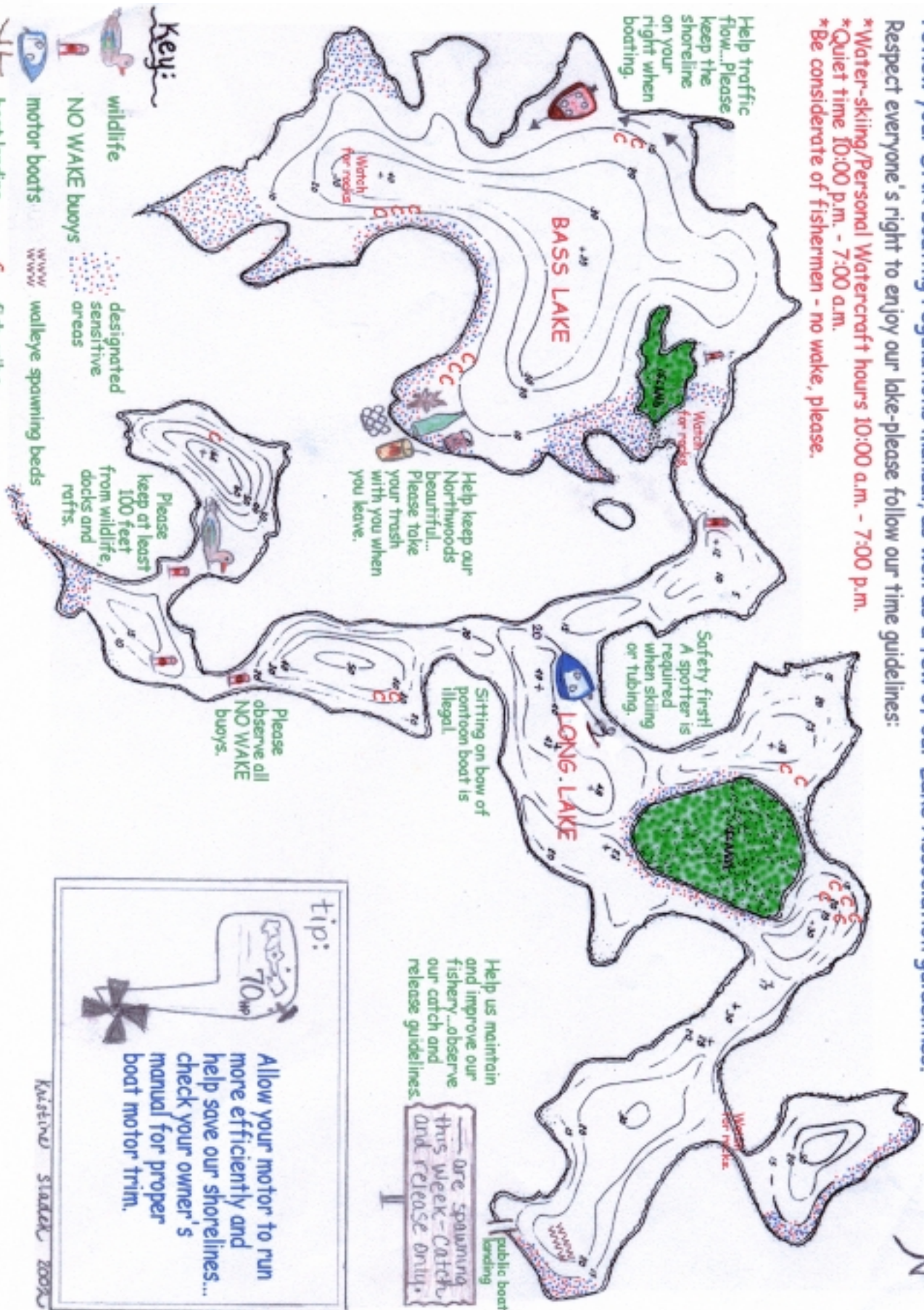
Please keep at least 100 feet from wildlife, docks and rafts.

Please observe all NO WAKE buoys.

tip: Allow your motor to run more efficiently and help save our shorelines... check your owner's manual for proper boat motor trim.

Key:

- wildlife
- NO WAKE buoys
- designated sensitive areas
- motor boats
- www walleye spawning beds
- boat landing
- C fish cribs



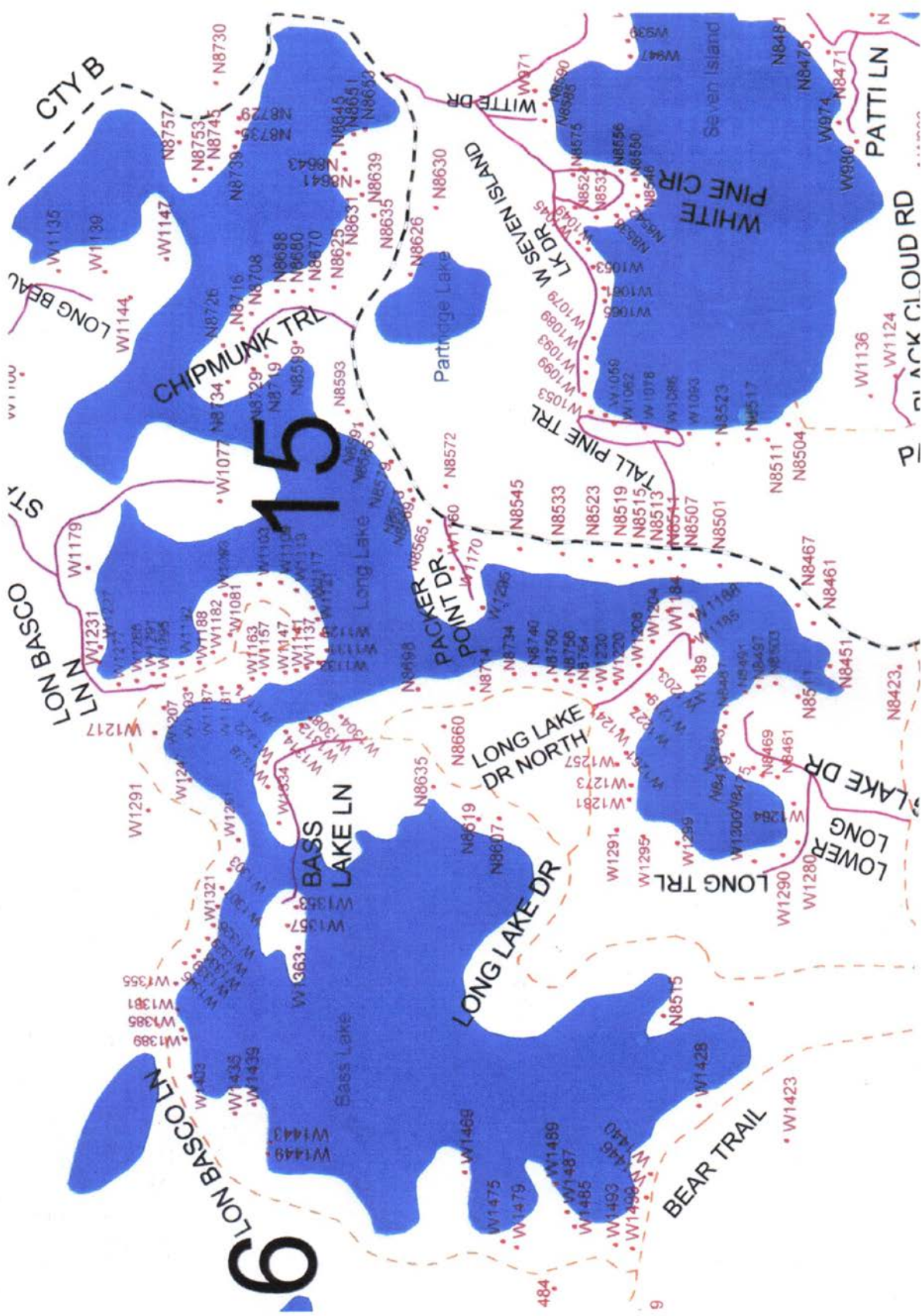


Exhibit C

Exhibit D

Slow-No Wake 100 foot zone

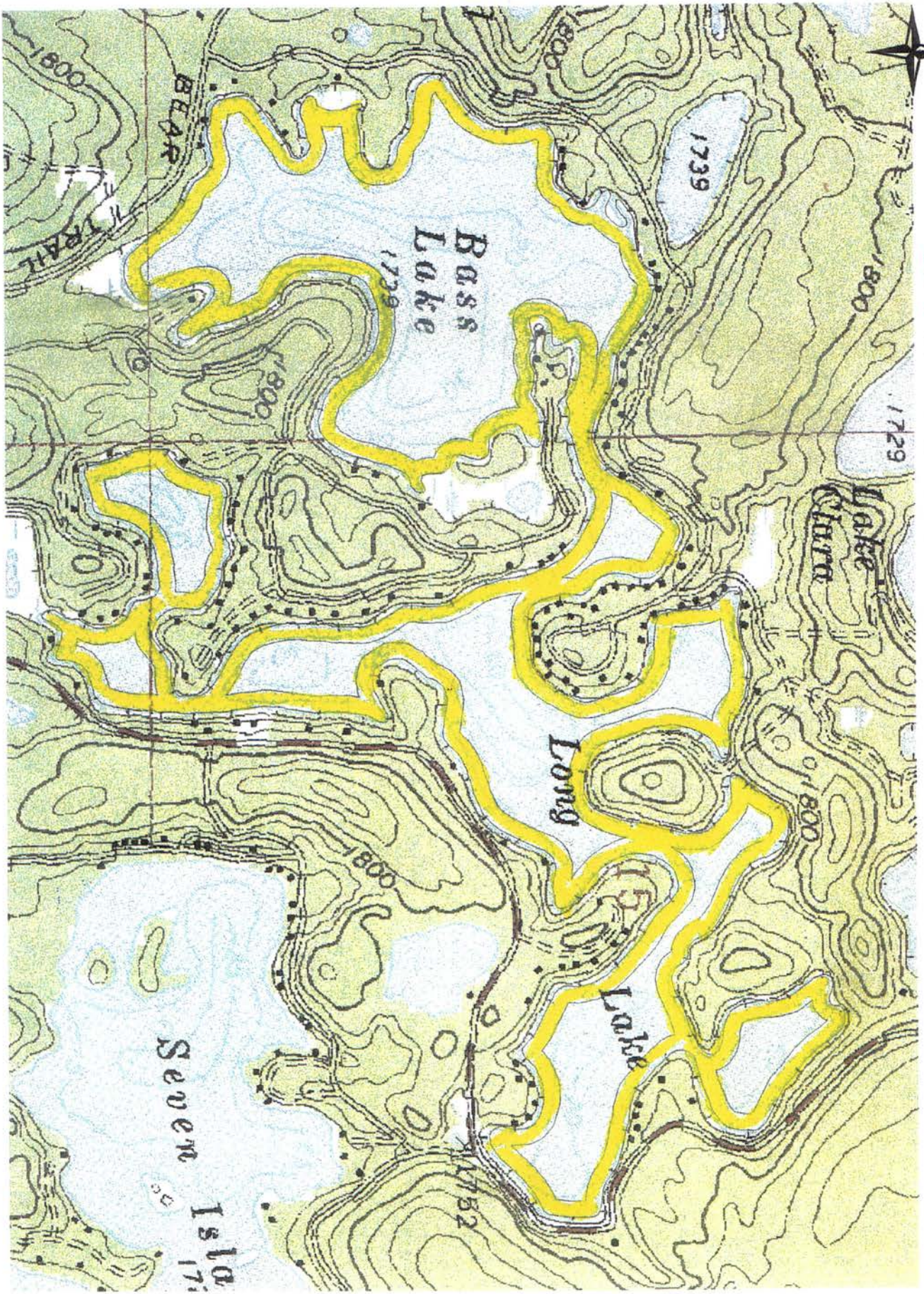


Exhibit E

Slow-No Wake 200 foot zone

